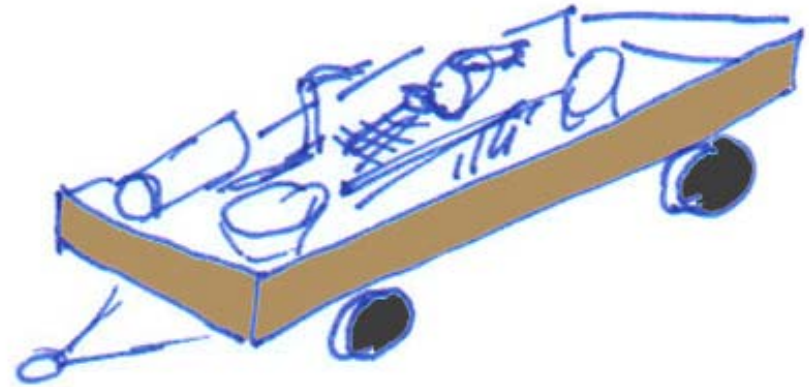
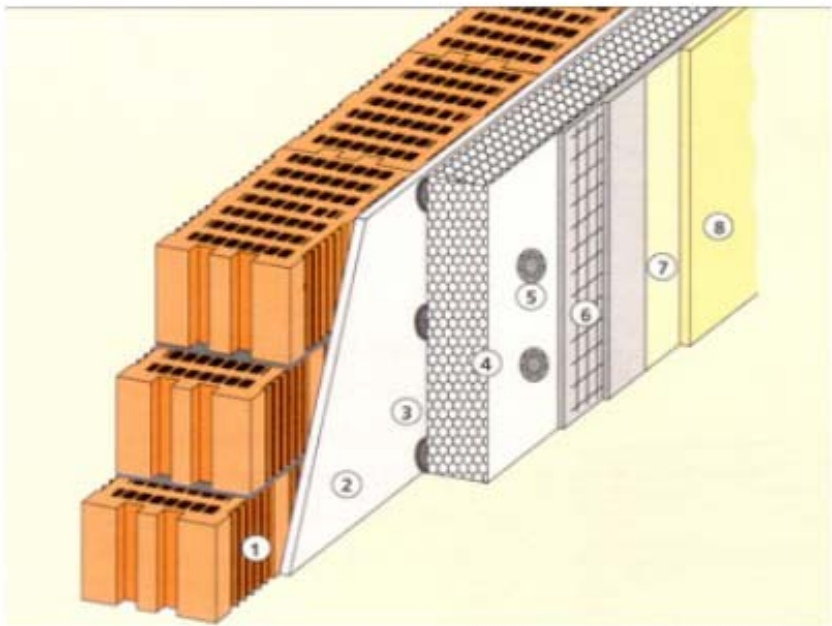
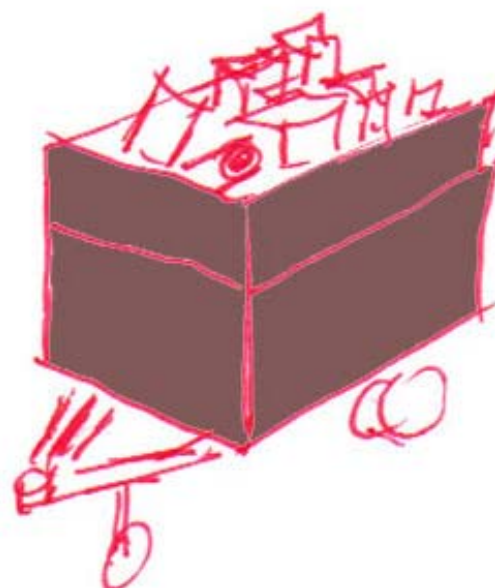
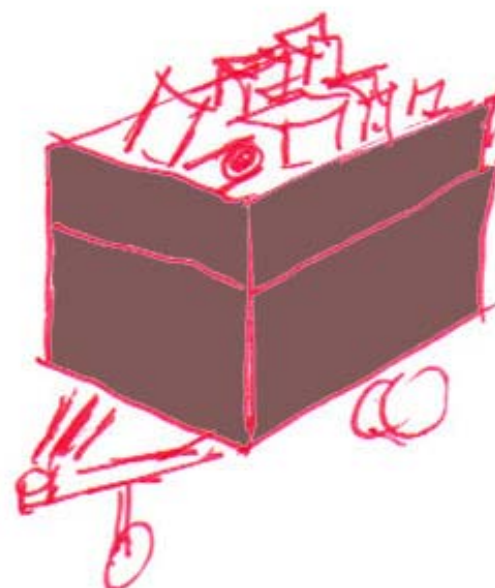
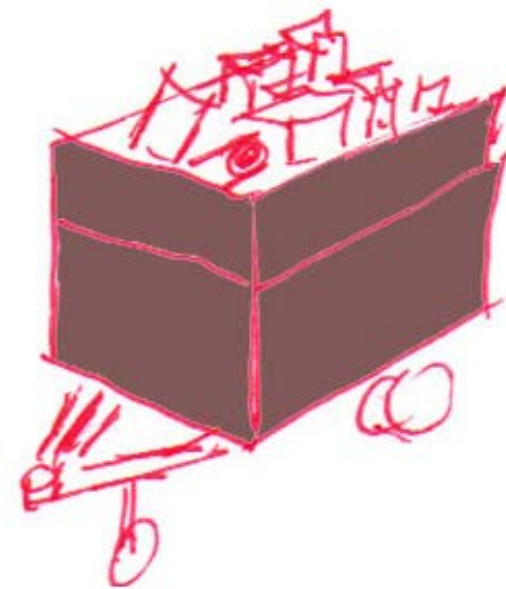


~ 1850







60%

DES GESAMTEN ABFALL AUFKOMMENS  
ENTSTAMMT DEM BAUSEKTOR









Brunner Gerüstbau

Brunner Gerüstbau

Brunner Gerüstbau

Brunner Gerüstbau

Brunner Gerüstbau

Brunner Gerüstbau

Brunner Gerüstbau

Brunner Gerüstbau

Brunner Gerüstbau



















16b



























































